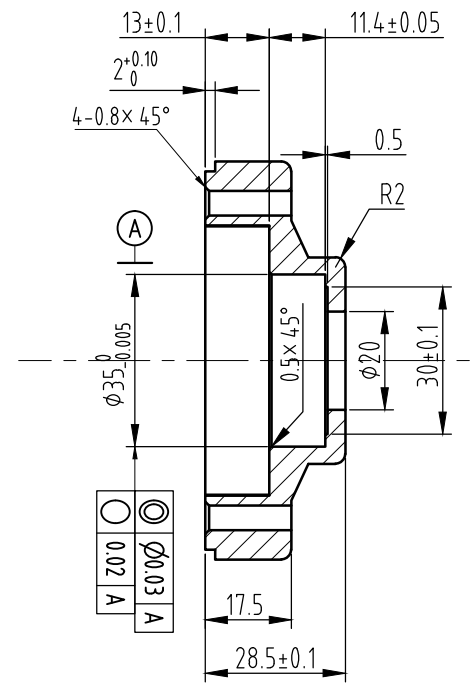
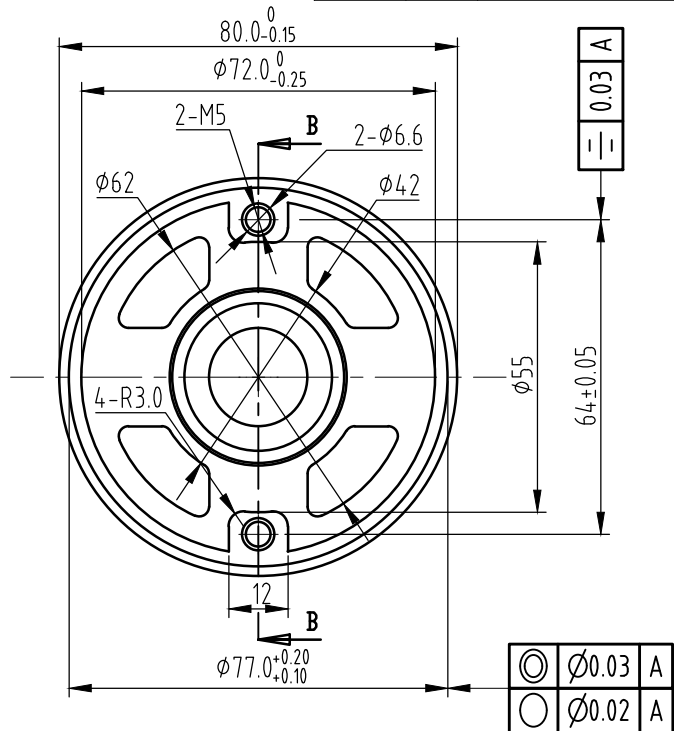
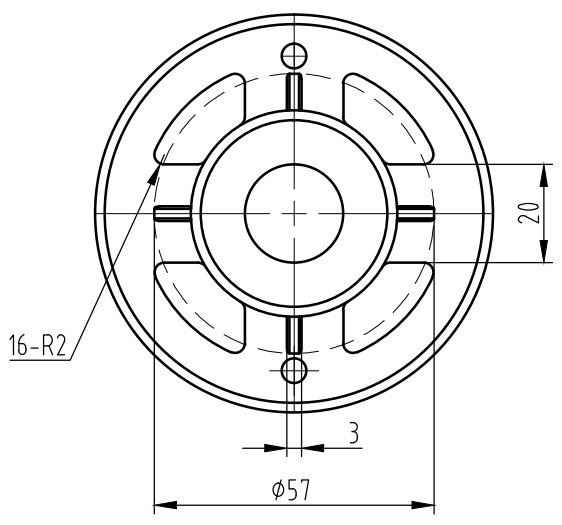
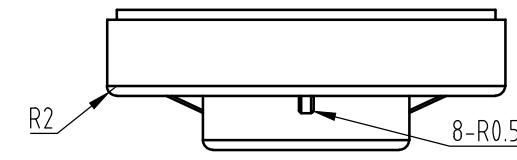
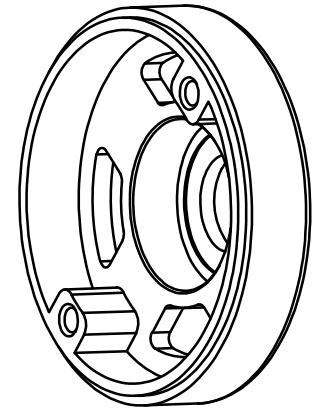


版本号 VERSION		修改号 NO.		修改说明 REVISION DESCRIPTION			更改日期 DATE	修改 REVISED BY	审核 CHECKED BY
----------------	--	------------	--	------------------------------	--	--	--------------	------------------	------------------



剖视图 B-B



技术要求:

1. 未注公差尺寸的极限偏差按IT14-GB1809.
2. 未注过度圆弧R0.3.
3. 零件表面光滑, 不能有缺料, 批锋, 裂纹, 变形等现象.
4. 材料符合ROSH标准.

◆ 特殊性尺寸, 要求CPK CHARACTERISTIC DIMENSION, REQUIRE PROCESS CAPABILITY CPK  ▲ 重要尺寸 IMPORTANT DIMENSION  ○ 无符号 NO SYMBOL 一般尺寸 GENERAL DIMENSION  ○ 仅针对模具制作控制, 不 要求作为来料检测项目 JUST FOR CONTROL OF TOOLING, NO REQUIREMENT FOR ACCEPTANT CHECK	<b>H<sub>SM</sub> althmate</b> 宁波海斯曼科技发展有限公司 Ningbo Healthmate Science And Technology Development Co., Ltd		制图: DRAWN BY:	设计: DESIGNED BY:	工艺: TECHNICS BY:		
	此图属海斯曼机密文件, 未经 允许, 禁止复制或转交第三方. THIS DOCUMENT IS CONFIDENTIAL PRO- PRIETARY OF HEALTHMATE, WITHOUT AUTHORITY. IT IS FORBIDDEN TO COPY OR PASS ANY PART OF IT TO A THIRD PARTY.		校对: COLLATED BY:	审核: CHECKED BY:	批准: APPROVED BY:		
	未注公差 DEFAULT TOLERANCE  X ±0.25 X.X ±0.20 X.XX ±0.10 X.XXX ±0.05 X° ±2°	图纸名称 DRAWING NAME  图纸编号 DRAWING NUMBER  材料 MATERIALS	端盖		比例 SCALE  1:1	版本 VERSION  S	幅面 SIZE  A4
	材料 ALUMINUM 102		出版日期 DATE  2009-09-02		参考零件 / 版本: REFERENCE / VERSION:		